

CHRISTY KLUG

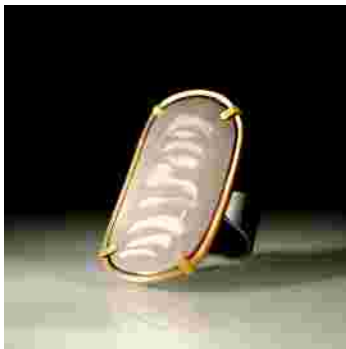
Art Jewelry

2011 Retail Catalog



Enamels/One of a Kind Page 2

Gold & Silver Page 5



To Order Call: 512 506 9040

E N A M E L S—One of a kind

The technique of enameling has enabled me to introduce a new color palette to my work; drawing directly onto the enamel is a very spontaneous act of artistic expression. The black lines on white enamel resemble charcoal on paper and the combination of these drawings and fabricated form bring art and craft together. Each piece is one of a kind. In addition to Vitreous Enamels, I utilize 18K and 22K Gold, Fine Silver, Sterling Silver as well as Tahitian Pearls and tulle in some designs.

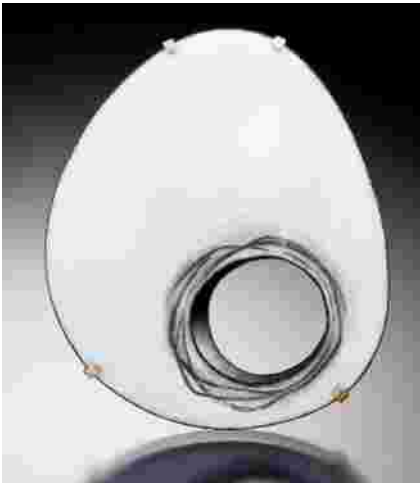
Each Series is available as a necklace, ring, earring and/or pin. Contact me directly for more information or to place an order.

Balla



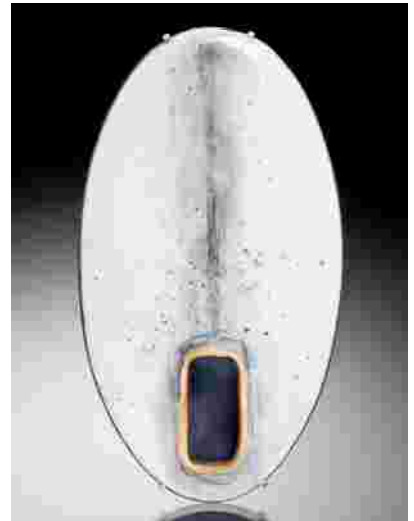
Dimensions: 2 inches in diameter

Les Oeuf



Dimensions: 2 inches high by 1 1/2 inches wide.

Los Noces



Dimensions: 3 1/2 inches high by 2 inches wide

Die Fumage



Dimensions: 3 inches high by 1/2 inches wide.

Feathered Fish



Dimensions: 3 1/2 inches wide by 1 1/2 inches high.

Graphite



Dimensions: 1 1/4 inches in diameter.

CHRISTY KLUG

Vienna



Dimensions: 2 inches in diameter.

Kinsei



Dimensions: 2 3/4 inches in diameter.

Cerrar



Dimensions: 2 1/2 inches in diameter.

Vrubel



Dimensions: 2 inches wide by 1 1/2 inches high.

Barras



Dimensions: 2 inches in diameter.

Graphite #2



Dimensions: 2 1/4 inches in diameter.

Gris



Dimensions: 2 inches wide by 2 1/2 inches high.

Garabatos



Dimensions: 3 inches in diameter.

Frou-Frou



Dimensions: 5 inches in diameter.

To Order Call: 512 506 9040

Deconstructed Graphite



Dimensions: 3 inches square.

Muse



Dimensions: 2 inches wide by 2 1/2 inches high.

Echo



Dimensions: 3 inches wide by 1 1/2 inches high.

Ink



Dimensions: 1 3/4 inches square.

Fugue



Dimensions: 1 1/2 inches square.

CHRISTY KLUG

Kinsei Series

22K Gold & Oxidized Sterling Silver.

**Necklace**

Dimensions: 1 1/2 inches high by 1 1/4 inches wide.

Order#: SGN255

**Ring**

Dimensions: 1 inch by 1 1/8 inches.

Order#: SGR256

**Earrings**

Dimensions: 2 inches long by 1/2 inch wide.

Order#: SGE257

**Cuff—Narrow**

Dimensions: 1/4 inch wide.

Order#: SGB258

Scroll Ring

**14K Gold & Oxidized Sterling Silver Ring**

Dimensions: 1 1/2 inches by 1/2 inches in diameter.

Order#: SGR141

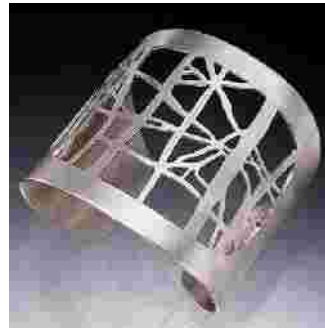
Blake Ring

**Oxidized Sterling Silver Band Ring**

Dimensions: 1/2 inch wide

Order#: SSR128

Triptych Cuff

**Sterling Silver Cuff**

Dimensions: 2 1/4 inches wide.

Order#: SSB44

Reed Earrings

**Sterling Silver Earrings**

Dimensions: 2 1/4 inches by 1/4 inches wide.

Order#: SS286

Petal Series

Oxidized Sterling Silver & Sterling Silver

**Pin/Pendant—Large**

Dimensions: 2 inches in diameter.

Order#: SSNP287

**Earrings—Clip or on Gold Wires**

Dimensions: 3/4 inch by 1 inch in diameter.

Order#: SSE288

**Earrings (drop)**

Dimensions: 2 1/2 inches long.

Order#: SSE289

**Double Ring**

Dimensions: 1 1/2 inches in diameter.

Order#: SSR311

To Order Call: 512 506 9040

Petal Series—continued



Pendant—Open Large

Dimensions: 2 1/2 inches in diameter.

Order#: SSN290



Pendant—Small

Dimensions: 1 1/2 inches in diameter.

Order#: SSN291



Bangle

Dimensions: 3 inches inside diameter.

Order#: SSC292



Ring

Dimensions: 1 1/2 inches in diameter.

Order#: SSR293

B

Floating Petal Series



Pendant

Dimensions: 1 3/4 inches in diameter.

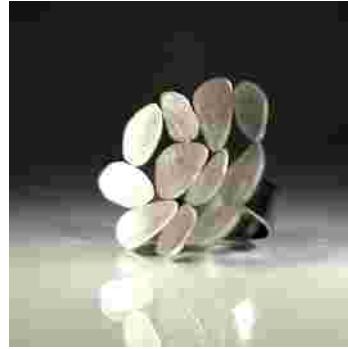
Order#: SSN310



Necklace—Globe

Dimensions: 1 1/4 inches in diameter.

Order#: SSN294



Ring

Dimensions: 1 1/2 inches in diameter.

Order#: SSR295



Earrings

Dimensions: 1 inch in diameter.

Order#: SSE296

Small Petal Series



Pendant

Dimensions: 1 1/2 inches in diameter.

Order#: SSN297



Ring

Dimensions: 3/4 inch in diameter.

Order#: SSR298



Earrings

Dimensions: 3/4 inch in diameter.

Order#: SSE299



Ring—Bowl

Dimensions: 1 1/4 inches in diameter.

Order#: SSR300

CHRISTY KLUG

Okano Series

22K Gold & Oxidized Sterling Silver.

**Necklace**

Dimensions: 2 1/4 inches in diameter.

Order#: SGN139

**Cuff**

Dimensions: 2 1/2 inches wide.

Order#: SGB164

**Small Cuff**

Dimensions: 1 1/2 inches wide.

Order#: SGB218

**Narrow Cuff**

Dimensions: 1/4 inch wide.

Order#: SGB262

**Earrings on Wires**

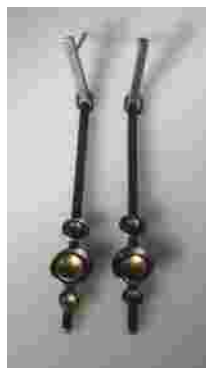
Dimensions: 3/4 inch in diameter.

Order#: SGE174

**Earrings on Posts**

Dimensions: 3/4 inch in diameter.

Order#: SGE261

**Earrings—Hinged**

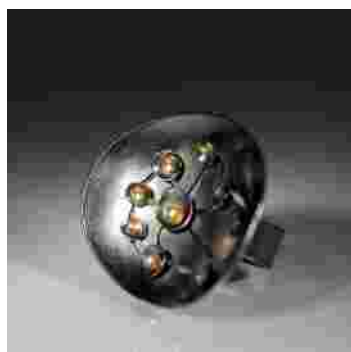
Dimensions: 2 1/2 inches long.

Order#: SGE259

**Gold Earrings**

Dimensions: 1 1/2 inches long by 1/4 inch wide.

Order#: SGE301

**Ring—Large**

Dimensions: 1 3/4 inches by 1 1/2 inches in diameter.

Order#: SGR302

**Ring—Medium**

Dimensions: 1 1/2 inches long by 1 inch wide.

Order#: SGR162

**Stackable Ring**

Dimensions: 1/8 inch wide.

Order#: SGR263

To Order Call: 512 506 9040

Leaf Series



Necklace

Pendant: 1 3/4 inches long by 1/2 inch wide.

Order#: SSN303



Ring

Dimensions: 1/2 inch wide.

Order#: SSR304



Cuff

Dimensions: 1 1/2 inches wide.

Order#: SSC305

Oxidized Sterling Silver & Sterling Silver



Earrings Silver or Oxidized Sterling Silver

Dimensions: 3/4 inch by 5/8 inch in diameter.

Order#: SSE306



Gravel Series—Round



Earrings

Dimensions: 1 1/4 inches in diameter.

Order#: SSE312

Gravel Series—Round continued

Oxidized Sterling Silver & Sterling Silver



Cuff

Dimensions: 3/4 inches wide.

Order#: SSB265



Ring

Dimensions: 1 1/2 inches in diameter.

Order#: SSR269



Earrings—Disc (Short)

Dimensions: 1 1/4 inches long by 3/4 inch wide.

Order#: SSE271



Earrings—Disc (Long)

Dimensions: 1 1/2 inches long by 3/4 inch wide.

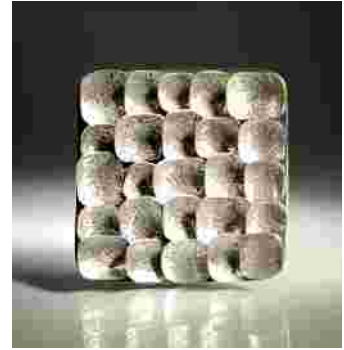
Order#: SSE267

Gravel Series—Square

Oxidized Sterling Silver & Sterling Silver



Necklace—Hinged
Dimensions: 16 inches in length.
Order#: SSN279



Pin/Pendant
Dimensions: 2 inches high by 2 inches wide
Order#: SSNP307



Bangle
Dimensions: 1/2 inches wide.
Order#: SSB265



Earrings—Short
Dimensions: 1 1/2 inches long by 1/2 inch wide.
Order#: SSE280



Earrings—Medium
Dimensions: 2 inches long by 1/2 inch wide.
Order#: SSE281



Earrings—Long
Dimensions: 2 1/2 inches long x 1/2 inch wide.
Order#: SSE270



Band Ring
Dimensions: 1/2 inch wide
Order#: SSR268



Ring
Dimensions: 1 1/2 inches square.
Order#: SSR308



Cuff—Narrow
Dimensions: 1/2 inches wide.
Order#: SSB265



Earrings—Square
Dimensions: 1 1/4 inches long by 3/4 inch wide.
Order#: SSE309

To Order Call: 512 506 9040



CHRISTY KLUG

P. O. Box 28151
Austin, TX 78755

Phone: 512-506-9040
www.christyklug.com
E-mail:
christyklug@sbcglobal.net